

XWEB EVO

Supervisor and Monitoring Systems



Background colors: NO-LINK, DEVICE-OFF, FSA, ACQ OFF

Device ON
Active Defrost
Keyboard LOCK
Keyboard UN-LOCK
Energy saving ON
Energy saving OFF
Light saving ON
Light OFF

Parameter programming
Language: en-GB Grp.: All

EMERSON
Dixell
XWEB200 EVO

Dixell™


EMERSON™
Climate Technologies

XWEB EVO



SUPERVISOR and MONITORING SYSTEMS

The **XWEB EVO** is the new system family for the optimum management of Retail field and HVAC/R applications. New innovative tools to improve the efficiency of both small and large applications are available such as the advanced graphical one to facilitate the data analysis. Furthermore, systems are provided with a customizable web user interface to make navigation easier and without any additional software. XWEB EVO is designed to obtain energy savings, thereby reducing running costs and helping to preserve the environment. Our solutions are synonymous with quality, user-friendliness and efficiency because they are focused to meet end user needs.

ALARM MANAGEMENT

An effective alarm management system easily detects and signals alarm status so prompt intervention can restore optimum functioning of the application.



FOOD QUALITY

Constant data recording, HACCP reports and timely alarm notification guarantee high quality of fresh and frozen food and is in compliance with the UNI EN 12830 rule.



HIGH CONNECTIVITY

A powerful hardware platform with USB, Ethernet, RS485 ports, and more, offers the maximum level of connectivity.



ENERGY SAVING

Special algorithms and continuous tracking of energy usage optimizes the application's efficiency by increasing energy savings and reducing costs.



HIGH INTEGRATION

The user interface is available for modern Web browsers without the need to install additional software. XWEB EVO is also compatible with HD and touch-screen technologies and tablets.



ENVIRONMENTALLY FRIENDLY

With our eco-friendly solutions, innovation and efficiency means respecting the environment by optimizing consumption and reducing pollution, gas emission and waste.



The SCALABLE SOLUTIONS

The XWEB EVO Series offers maximum adaptability suitable for every kind of application, from petrol station, to hypermarket, convenience store and restaurant chains.

Hypermarkets

Supermarkets

Restaurants

Convenience Stores

Petrol Stations

Alarm Management and Control

Monitoring and Control

Industrial Monitoring and Control

Monitoring, Control, Energy Optimization and Supervision

SUPERVISOR and MONITORING SOLUTION for RETAIL

With its powerful hardware platform, Web technology architecture and a complete range of dedicated functions, XWEB EVO is the right choice for the Retail environment.

AIR CONDITIONING & SPECIAL APPLICATIONS

LIGHTING, LEAK DETECTION & ENERGY MONITORING

COMPRESSOR RACKS & CO₂ SOLUTIONS

CASES & COLD ROOMS

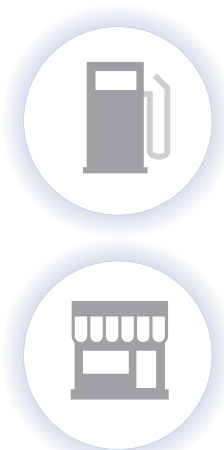
XCENTER
Centralized Retail Management for Call Centers

ProAct™ Services

- Alarm Management
- Energy Monitoring & Targeting Reports
- Setpoint Management
- Smart Dispatch
- Site Administration
- Food Quality Reports
- Enhanced Retail Services

SUPERVISOR & MONITORING SOLUTIONS

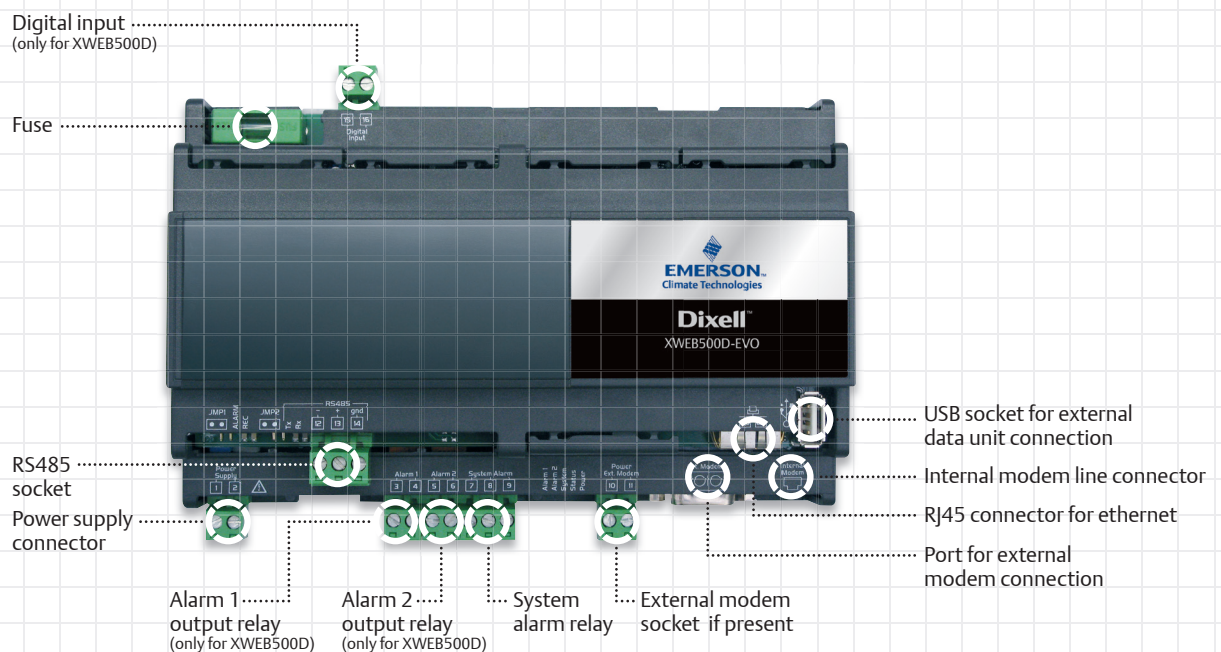
XWEB300D EVO



ALARM MANAGEMENT and CONTROLLING WEB SERVER

It is extremely well suited for 6 or 18 device installations such as petrol stations, mini-market, small storage centres. XWEB300D EVO is the ideal solution for the remote assistance to the plant. Connection from PC is made simply using standard web browser (Microsoft Internet Explorer® and Firefox®); the information is displayed as web pages.

- ⦿ 10DIN Rail module directly inside the machine board or wall mounting with brackets
- ⦿ Up to 1 year temperature recording
- ⦿ Optimized controller values visualization via “Single View” and “Overview” functions
- ⦿ Possibility to modify the parameters of the connected devices remotely
- ⦿ Automatic data export to USB pendrive
- ⦿ Alarm notification via FAX, SMS or e-mail



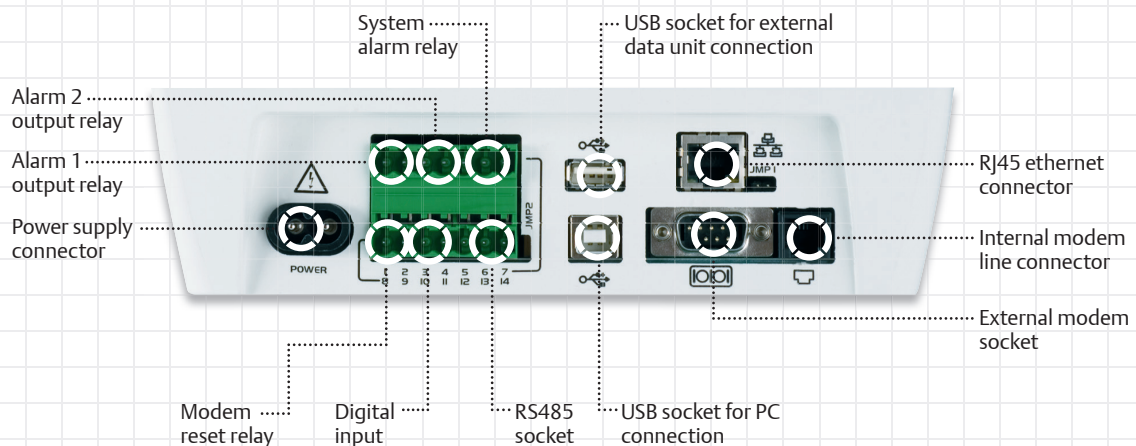
XWEB500D EVO & XWEB500 EVO



MONITORING and CONTROLLING WEB SERVER

They are the ideal solution for medium installations up to 20, 36, 50 or 100 devices, such as petrol stations, supermarkets or storage centers. Their innovative and useful features make the instrument suitable for medium-large applications such as production and storage goods centers. Thanks to the two available formats, they can be installed whether on DIN Rail or wall or panel mounting, but can also be used as desk instrument. Connection from PC is made simply using standard web browser (Microsoft Internet Explorer® and Firefox®); the information is displayed as web pages.

- 10DIN Rail module directly inside the machine board or wall mounting with brackets (XWEB500D EVO)
- Up to 1 year temperature recording
- Optimized controller values visualization via “Single View” and “Overview” functions
- Stand alone usage thanks to the back lit LCD local display and keyboard (XWEB500 EVO)
- Possibility to modify the parameters of the connected devices remotely
- Customizable web user interface (layout)
- Performance meter for cooling demand control
- Automatic data export to USB pendrive
- Easy plant management by means of the “Scheduler” to send commands according to a custom calendar
- Alarm notification via FAX, SMS or e-mail
- HACCP report print-out in pdf format
- CRO for compressor rack optimization



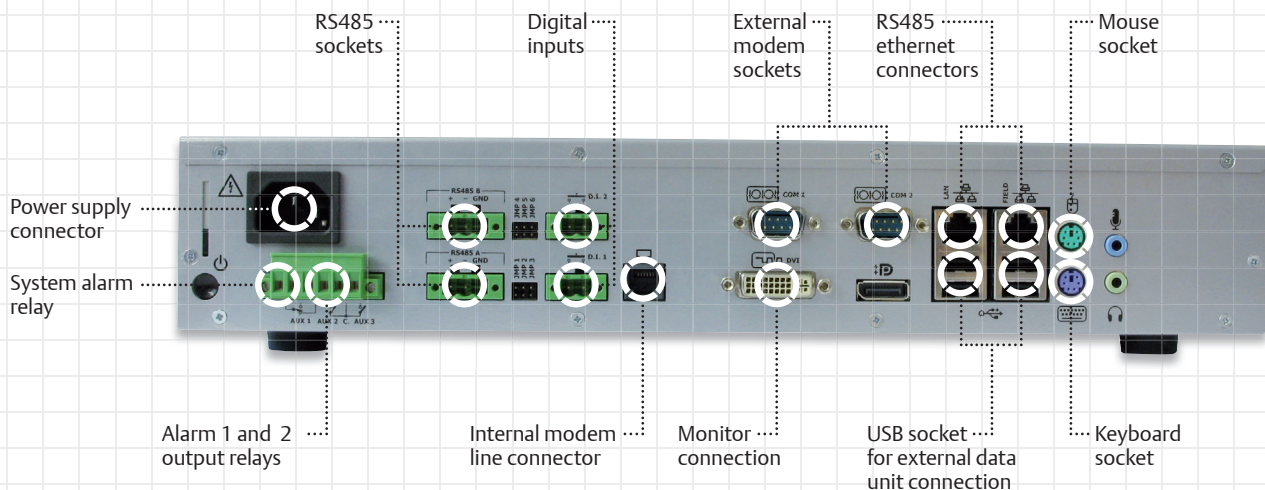
XWEB3000 EVO



INDUSTRIAL MONITORING and CONTROLLING WEB SERVER

It is designed for larger installations with up to 494 devices such as supermarkets, hypermarkets or large storage and distribution centers as well as production and storage goods processing such as fast-food, restaurants and catering applications. XWEB3000 EVO is the ideal solution to fulfill customer service needs thanks to the remote connection. It allows users to control the temperature, to print-out reports and more operating even without using a PC but simply connecting it to a monitor, keyboard and mouse. Connection from PC is made simply using standard web browser (Microsoft Internet Explorer® and Firefox®); the information is displayed as web pages.

- ⦿ 19" RACK or desk mounting
- ⦿ Up to 1 year temperature recording
- ⦿ Optimized controller values visualization via "Single View" and "Overview" functions
- ⦿ Dual instrument network to increase safety and total length (up to 2Km)
- ⦿ Possibility to modify the parameters of the connected devices remotely
- ⦿ Customizable web user interface (layout)
- ⦿ Performance meter for cooling demand control
- ⦿ Easy plant management by means of the "Scheduler" to send commands according to a custom calendar
- ⦿ Alarm notification via FAX, SMS or e-mail
- ⦿ HACCP report print-out in pdf format



XWEB5000 EVO



MONITORING, CONTROLLING and SUPERVISOR WEB SERVER

It is provided with a powerful supervisor engine suited for larger installations (with up to 494 devices) in the refrigeration, conditioning and building automation field, where it is necessary to program several different interactive actions that the controller has to perform. It is extremely well suited to hypermarkets, large storage and distribution centres, as well as production and storage goods processing and it is ideal for customer service centers. The system manages the alarm transmission to the “in charge” service (via FAX, e-mail, SMS and also through relay outputs). No PC is necessary using direct connection of a monitor, keyboard and mouse.

- ⊙ 19" RACK or desk mounting
- ⊙ Up to 1 year temperature recording
- ⊙ Optimized controller values visualization via “Single View”, “Run Time” and “Overview” functions
- ⊙ Dual instrument network to increase safety and total length (up to 2Km)
- ⊙ Possibility to modify the parameters of the connected devices remotely
- ⊙ Customizable web user interface (layout)
- ⊙ Performance meter for cooling demand control
- ⊙ Easy plant management by means of the “Scheduler” to send commands according to a custom calendar
- ⊙ Alarm notification via FAX, SMS or e-mail
- ⊙ HACCP report print-out in pdf format
- ⊙ Powerful supervising engine with embedded editor and field simulator
- ⊙ CRO for compressor rack optimization
- ⊙ Dew point for anti-sweat heater control



SUPERVISION

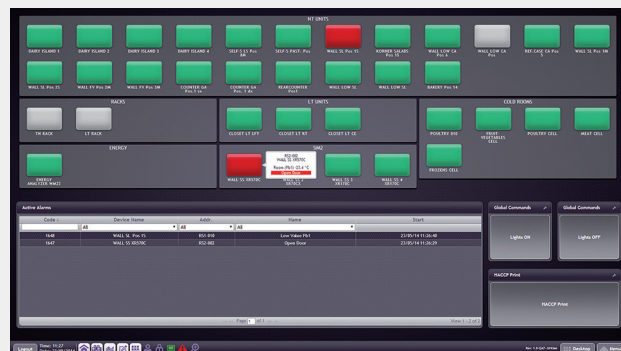
With XWEB5000 EVO it is possible to intervene sending commands to monitored units with algorithm made by the installer. He can quickly and easily create supervision “Projects” by programming links between the input variables (inputs, status and outputs of a controller) and defining what actions the system must take when these conditions are met; several projects can run simultaneously.

It's possible, for example, to manage the use of plant lights, internal or external signs, the battery charge/discharge as fork lifts, increasing the energy saving. In case of compressor fault or when the absorption threshold exceeds the set, the monitoring unit take actions to interact with the rest of system.



OVERVIEW DESKTOP

A clear and intuitive homepage that represents the control panel of the entire site. Once the network of devices is configured, the page is built automatically reducing the time required for plant start-up. The user can quickly check the status of the units (operative, alarm, stand-by) displayed as colored boxes. On the lower part of the screen there is a list of active alarms and buttons for quick and easy printing of the HACCP report. The report can be sent via email, printed directly or saved as PDF file.

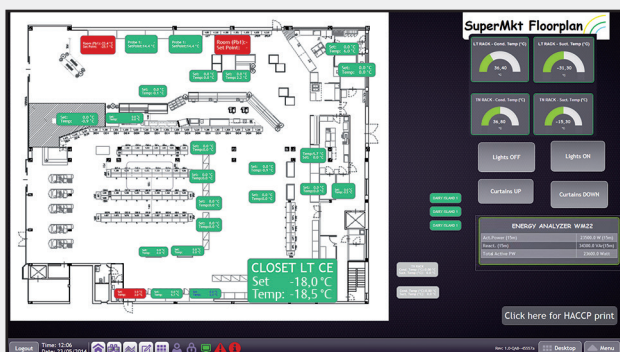


DEVICE VIEW

This powerful tool allows the user to have access to the recent status of the single controller updated in real time, send commands to the controller (for example, force a defrost), adjust the set point, or modify its parameters. The parameter map can be exported into various formats: CVS/XLS/WIZ-MATE and can be reused with other controllers within the same system or a different system.

GRAPHICS

This new graphical tool ensures fast and easy data analysis with the multi-axis system, vertical cursor and the automatic zoom. Multiple analog variables can be represented on the same pictorial system, as well as the course of output's and alarm's status. The high sampling rate of circular graphs provides more detailed information and is in-demand by service personnel for diagnostics.

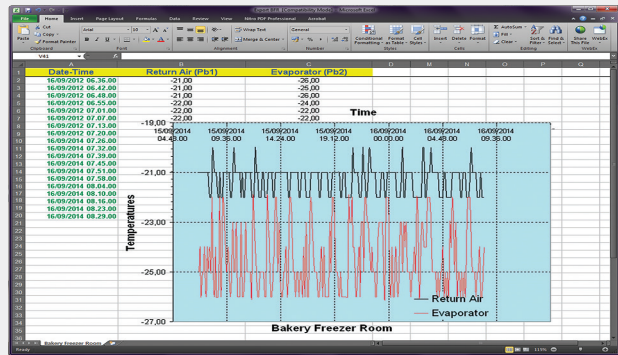
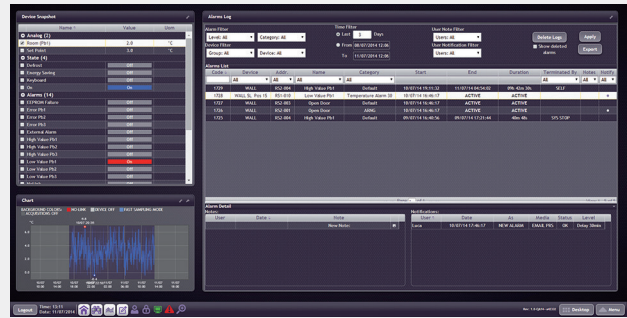


LAYOUT

XWEB EVO features the ability to create customizable floor plans. A new set of graphical tools can be used to graphically represent your site without installing any additional software on your PC, both for creating and using the layout function.

ALARMS LIST

This page reports the full list of alarms detected by the system. It is possible to filter the list by device, alarm type or time. XWEB EVO provides all information related to each alarm and specifies the status of the device when the alarm has been detected, trends two hours around the alarm and shows an alarm notifications list with their status.

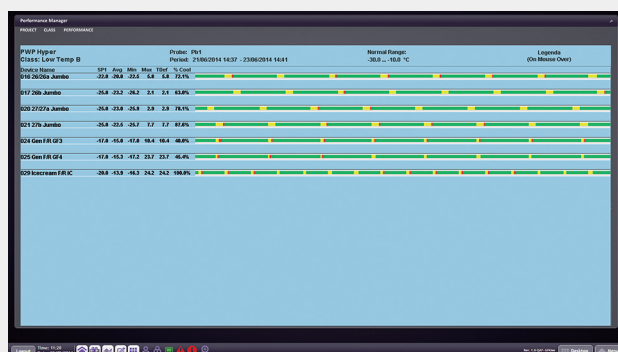
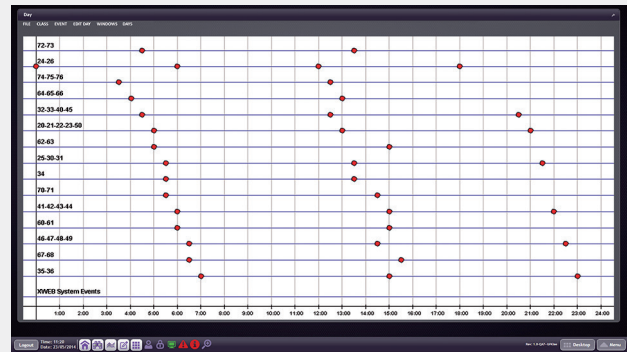


DATA EXPORT

It is possible to export all data information in a Microsoft Excel® file. The user can later use this information to build graphs or to analyze data. It is possible to select a data interval and filter between different controllers.

SCHEDULER

The scheduler is a powerful graphical tool to manage commands to be sent to the controllers. Each page provides an overview of all daily activities. In this way energy saving routines and defrosts can be easily managed.



PERFORMANCE METER

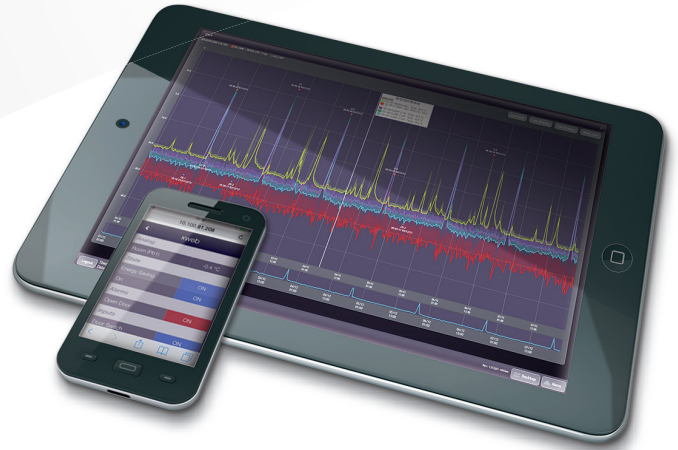
This highly appreciated function allows users to verify the right temperature per each single device (wall cabinets, benches, rooms, and more). The graphical representation offers a complete view of the plant operating mode.

XWEB EVO CONNECTIONS

XWEB EVO provides greater system-integration with other systems through HTTP/FTP/XML protocols. Below is an overview of several methods to connect with the systems.

CONNECTION via TABLET and SMARTPHONE

The user can access the revolutionary XWEB EVO user interface with tablets and smartphone using their web browsers.



LOCAL CONNECTIONS

XWEB EVO systems can be connected directly to a PC. Furthermore, XWEB3000 EVO and XWEB5000 EVO can be used in stand-alone mode through a monitor, keyboard and mouse connection because of their complete and powerful hardware platform.

REMOTE CONNECTIONS

XWEB EVO systems servers can be remotely accessed using several methods:

- ⊙ by modem with point to point connection;
- ⊙ by Ethernet network with standard net connector RJ45;
- ⊙ by Internet connection, once provided a public and static IP address.



XWEB EVO GUIDE

	XWEB300D EVO	XWEB500D EVO	XWEB500 EVO	XWEB3000 EVO	XWEB5000 EVO
Applications	small and medium	medium and large	medium and large	large	large with supervision
Format	10 DIN Rail	10 DIN Rail	210x230x87h	350x235x47h	350x235x47h
Power supply	24Vac or 110±230Vac	24Vac or 110±230Vac	110Vac or 230Vac	110±230Vac	110±230Vac
Display			•		
N° of instruments	6-18	20-36-50-100	20-36-50-100	494	494
USB socket	1	1	1	6	6
Relay output	1	3	3	3	3
Digital input		1	1	2	2
Ethernet socket	1	1	1	2	2
RS485 socket	1	1	1	2	2
External modem	analogue or GSM	analogue or GSM	analogue or GSM	analogue	analogue
Internal modem	analogue	analogue	analogue	analogue	analogue
RS485 line check	•	•	•	•	•
Parameter programming	•	•	•	•	•
Overview home page	•	•	•	•	•
Device view	•	•	•	•	•
Fast Sampling Mode	•	•	•	•	•
Charts	•	•	•	•	•
Data Export in Excel®	•	•	•	•	•
Circular graphics (6h - high resolution charts)	•	•	•	•	•
Real time graphics	•	•	•	•	•
System logs	•	•	•	•	•
User setup	•	•	•	•	•
Device setup	•	•	•	•	•
System setup	•	•	•	•	•
Calendar setup	•	•	•	•	•
System update	•	•	•	•	•
Alarm setup	•	•	•	•	•
XCENTER	•	•	•	•	•
Backup/Restore	•	•	•	•	•
Runtime	•	•	•	•	•
Data log status	•	•	•	•	•
Daily export module	•	•	•	•	•
Language manager	•	•	•	•	•
HACCP report		•	•	•	•
Layout		•	•	•	•
Global commands		•	•	•	•
Alarms on XJR40D module		•	•	•	•
Scheduler		•	•	•	•
CRO module		•	•	•	•
Performance meter		•	•	•	•
Local print function				•	•
Dew point module					•
Supervision module					•

EmersonClimate.com/Dixell

Dixell™

Dixell S.r.l. - 32010 Pieve d'Alpago (BL) ITALY - Z.I. Via dell'Industria, 27
Tel. +39.0437.9833 r.a. - Fax +39.0437.989313 - EmersonClimate.com/Dixell - dixell@emerson.com

release 1.1 - 1582006250-GB

All trademarks are property of their respective owners.

Dixell reserves the right to alter its products without notice. All rights reserved.

Because environmental conditions are outside of Dixell's control, we cannot assume liability for results obtained nor any damages that may occur due to improper application.

Manuals and updates are available on our Web Site EmersonClimate.com/Dixell



EMERSON. CONSIDER IT SOLVED.™