

What's new

Future-proof solutions for a smarter world



XWEB EVO v. 5.3

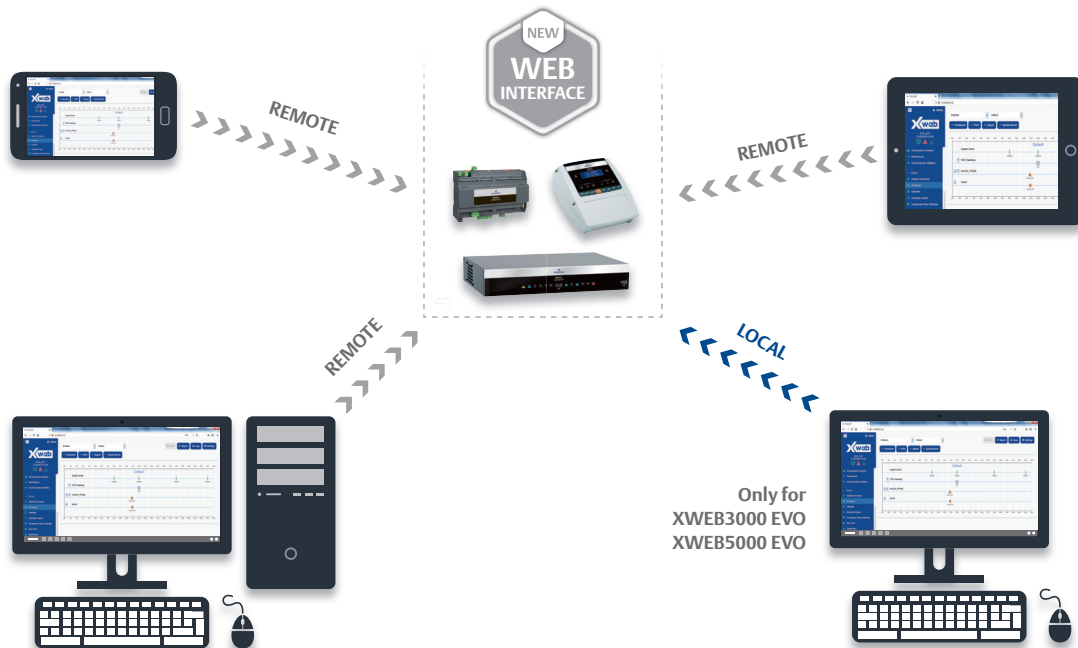


New web interface for supervisor and monitoring systems

The well-known XWEB EVO family for the optimum management of Retail field and HVAC/R applications, is even more enhanced today thanks to the new web user interface developed to allow easier and faster access to information. The new look displays immediate and clear information; the unique interface allows the user to have the same rich user experience even for local (XWEB3000/5000), remote (via PC) or mobile (via tablet and smartphone) access. Furthermore, systems are provided with a customizable web user interface for navigation without any additional software. XWEB EVO is designed to obtain energy savings, thereby reducing running costs and helping preserve the environment. Our solutions are synonymous with quality, user-friendliness, and efficiency because they are focused to meet end user needs.

Unique interface

The new XWEB EVO web interface automatically adapts to each kind of device. The same look is available for PC, tablet, smartphone and XWEB3000/5000 local interface, ensuring the same completeness of information for mobile devices.



Easier instrument installation

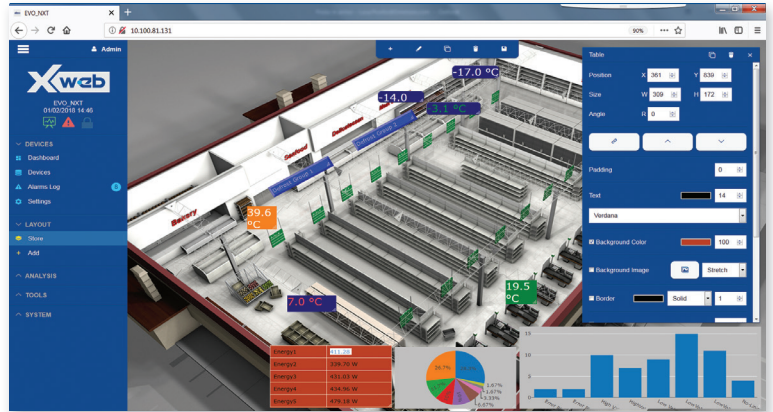
This new function is sought after and appreciated by OEMs because it allows quick access of instrument preconfigurations during the installation time.

The main screens

LAYOUT

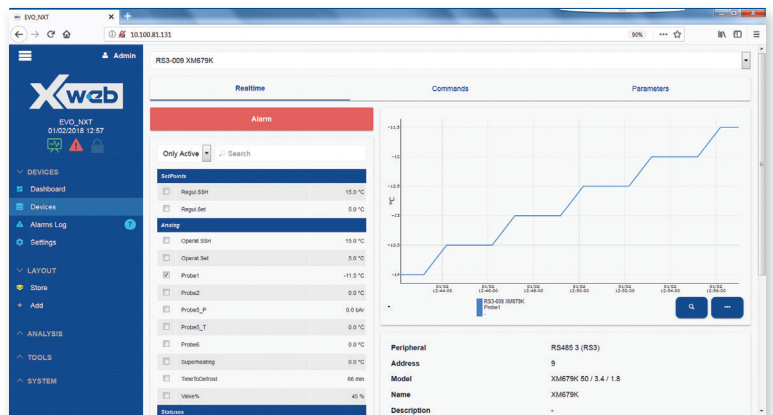
A new powerful graphic editor makes XWEB layout the ideal solution to create tailored floorplans according to customer needs.

Using this function, the user can quickly access controller data and even send a command to a controller.



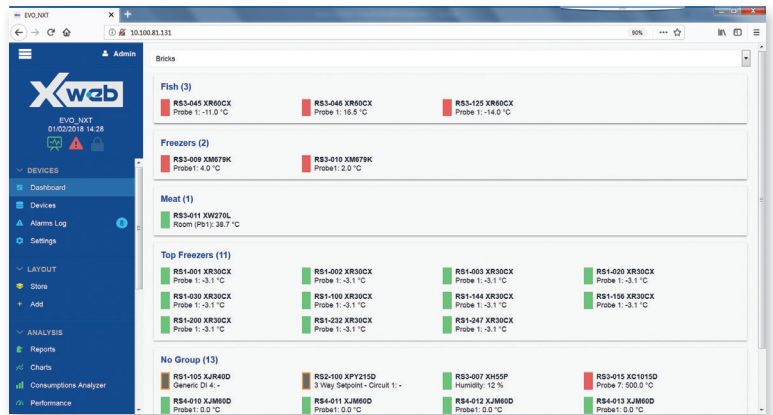
DEVICE VIEW

This powerful tool allows the user to have access to the recent status of the single controller updated in real time, send commands to the controller (for example, force a defrost), adjust the set point, or modify its parameters. The parameter map can be exported into various formats: CVS/XLS/WIZMATE and can be reused with other controllers within the same system or a different system.



DASHBOARD

The new Dashboard allows the user to choose among different layout options that are available on XWEB for an easier and even more responsive navigation.

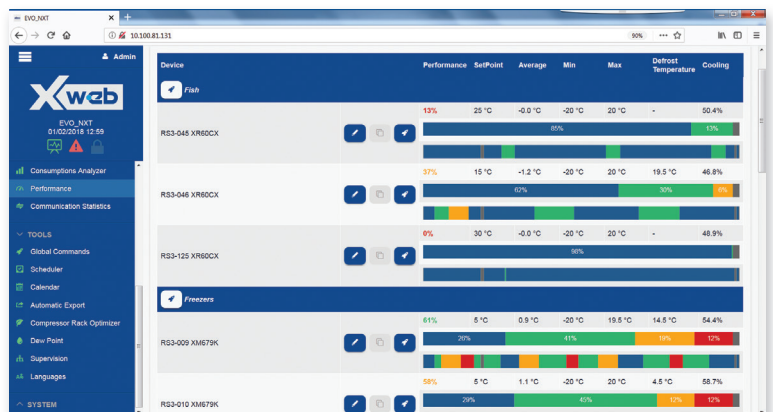


PERFORMANCE METER

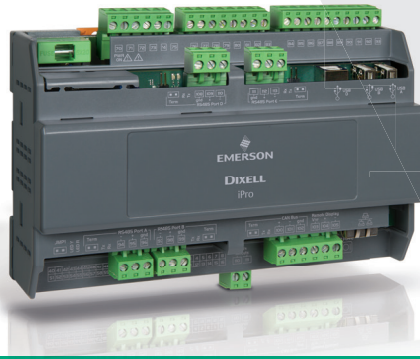
This highly appreciated function allows users to verify the right temperature for single devices (wall cabinets, rooms, and more).

The graphical layout offers a complete view of the plant operating mode.

The new automatic configuration makes the use of this function faster and easier.



iPro v. 2.0



Enhanced programmable controllers with more connectivity options

The new iPro programmable controller family has been extended with new, high-level hardware that increases the performance and connectivity capabilities in order to allow users to create even larger applications for both HVAC/R and general purpose markets. The new controller, one of the most current and innovative on the market, allows you to develop your own applications for any type of system thanks to the new ISaGRAF® development environment.



Powerful CPU

- New CPU to increase the application size and performances
- RAM memory increased 64MB
- Flash memory increased 512MB (10DIN and iProLINK) and 128 MB (4DIN)



Up to 3 USB ports

The 10DIN controllers have 2 USB (host) ports for managing upgrades, external converters, or nano devices. 1 USB (device) port is available for PC connection.



Up to 4 RS485 ports

The 10DIN controllers allow the OEMs to enlarge this application through the flexibility of the 2 additional RS485 communication ports. They can be used to connect additional ModBUS actuators (probes, fans, transducers and more) in order to extend the application I/O capability for larger solutions.



Wi-Fi connectivity

For the 10 DIN format is available the useful nano Wi-Fi connection that is the ideal solution in case of SMS/e-mail sending and connection to Wi-Fi network.



HMI range extension

Now the 4DIN controllers can also support the new IPCH keyboard.

This new interface is completely programmable via iPro and is designed for small units for the HVAC/R world.

iPro APPLICATION for HVAC



Advanced applications for air handling units & dry coolers

Thanks to our extensive experience gained by developing the Chiller and Heat Pump applications, Dixell has developed new applications based on iPro platform for the HVAC field. The new AHU & DRY COOLER applications, with their high configurability, made easy by the new user interface and the integrated web server, makes it usable both by machine builders and installers. The new applications with the Dixell controller can be easily integrated into a system network thanks to native connectivity to the proposed hardware.



AHU APP

The application for AHU ensures optimal control of the temperature, humidity, pressure, air quality and flow, for accurate regulation both in conditioning and in process. The complete management of the most advanced construction technologies (heat exchanger, variable flow rate, and more...) ensures high energy efficiency performance.



DRY COOLER APP

The new application for the control of DRY COOLER units add to the regulation of ventilation a high-performing management of pump stations, adiabatic cooler, and heat exchanger. The flexibility of the application allows to use it in several application combinations.

Optimized management of the unit

The high connectivity and simplified configurability allow an efficient, quick and intuitive management of the unit even by remote. The application is based on function blocks and is customizable in an easy and fast way.



USB to download data and update the application



It is possible, for more advanced users, to customize the product by adding special features, changing logics, or simply adapting it to family business feeling



Remote accessibility for:

- Configuration
- Supervision
- Control
- Maintenance

The control application has all the main functions grouped into intelligent function blocks placed in an editable library available to the programmer

IC100 EVO



Solutions for chillers and heat pumps with domestic hot water management

IC100 EVO is the new series of controllers dedicated to chiller and heat pump with one gas circuit, available now also in CH format. Compactness, extreme flexibility, the possibility to control electronic expansion valves (connection to an IEV driver is required) and advanced features such as free cooling and domestic hot water, are the main characteristics of this new series. Air/air, air/water, water/water, motor-condensing, geothermal heat pump, and dryer units with a maximum of three compressors can be controlled by the new IC100 EVO.

High connectivity

SMARTPHONE/PC/TABLET



INTERNET/INTRANET



MASTER/SLAVE MODULE

- Up to 10 slave units



CONNECTIVITY MODULE

- ModBUS® (M/S or TCP/IP)
- BACnet® TCP/IP slave



XWEB SYSTEMS

- Supervision, analysis and alarm management



GATEWAY

- LON

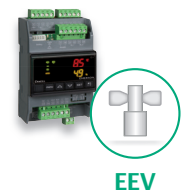
RS485
ModBUS®

INTERFACES



LAN

EEV DRIVERS



Main features

- The new IC100 EVO series greatly improves the already remarkable performance of the current IC100 series.
- Main type of compressors (scroll, screw, and inverter) can be managed, fan and water pump can be controlled in ON/OFF or modulation mode, and several new functions have been added to optimize the regulation and the management of the heat pump.
- With the large number of input and outputs and the possibility to connect the electronic expansion driver IEV, it is possible to manage optimally one circuit chiller and heat pumps.

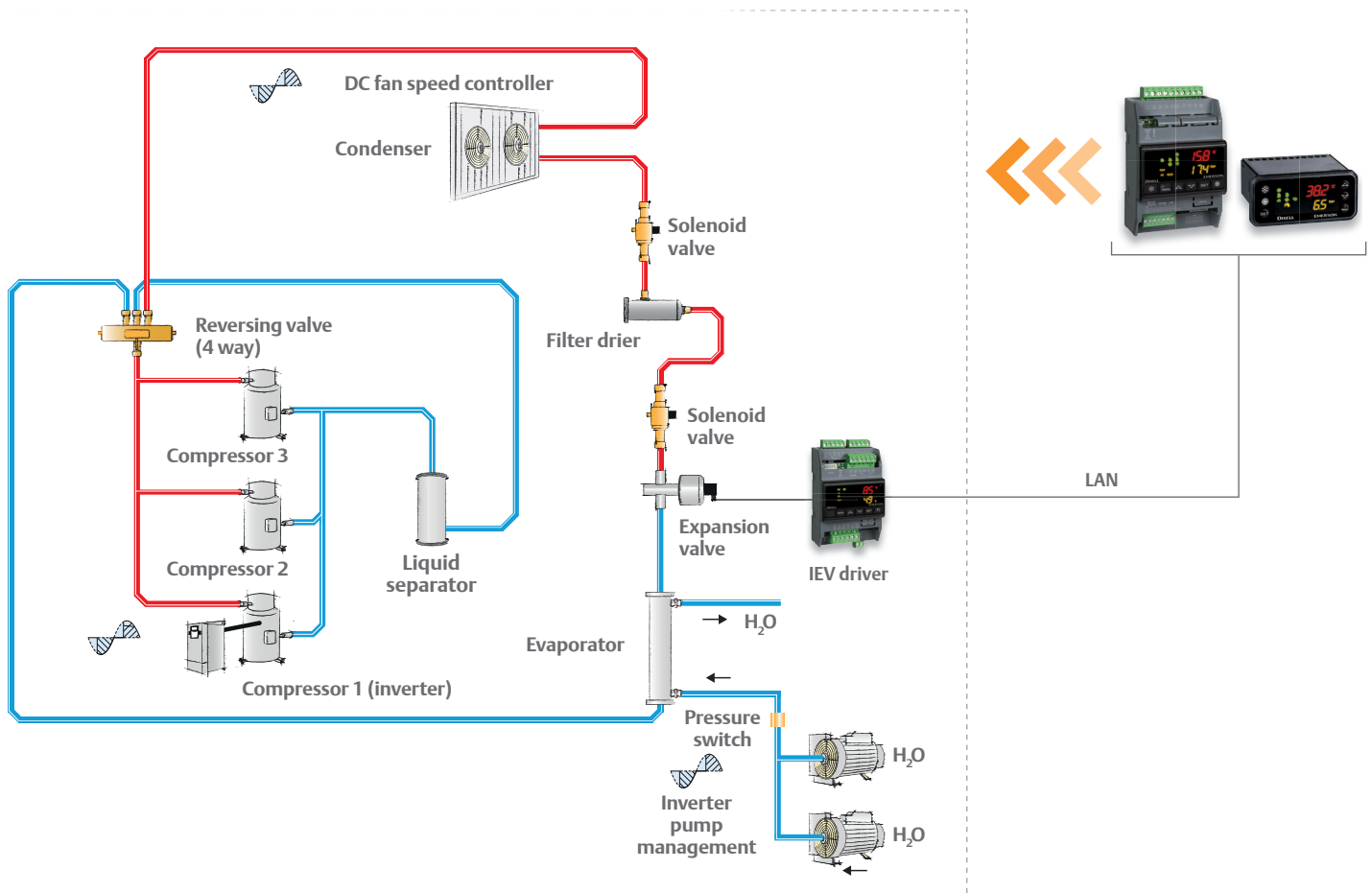


Special functions

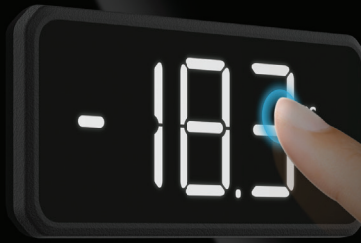
- Power reduction on critical working conditions (detected by temperature or pressure sensors)
- Power reduction via digital input (to reduce consumption during high cost time band)
- Compressor management to equalize working hours or starts-up
- Humidity control
- Pump down
- Heat recovery
- Geothermal free cooling
- Second set point (by scheduled time band or digital input)
- Dynamic set point
- Data logger up to 100 alarms (alarm code, date, hour/min, machine status)
- Easy parameters programming via Wizmate software



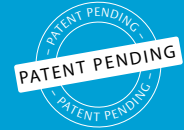
1-circuit up to 3-compressors



XR-T



Compact touch screen solutions for commercial refrigeration, food service and catering



XR-T is the revolutionary family of Full Touch controllers that introduce a new way to interact with your system. More available info, high level of elegance, easy to clean, intuitive interaction and more, are only few of the several features that characterize these new controllers. They are particularly appreciated for their sleek design and elegant style and are the ideal solution for: ice cream freezers, pastry refrigerators, warming cabinets, refrigerated cabinets, wine cellars, showcases, refrigerated counters.

- Capacitive touch user interface
- Ultra wide interactive display
- Natural refrigerants ready
- Water and dust resistant

• Visit www.fulltouch.info



Experience the new touch sensation



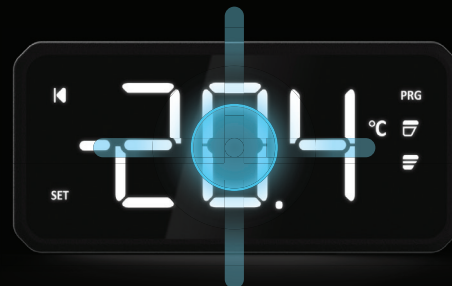
Tap and Hold
Activate / Deactivate



Double Tap
Change Screenshot / Save

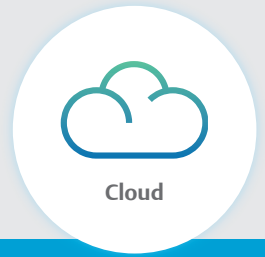
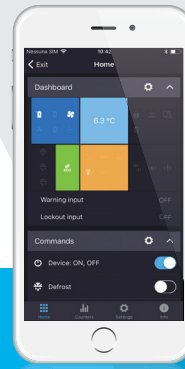


One Tap
Switch ON / Switch OFF



Swipe
Browse / Modify

XR-CHC & XRB-CHC



Bluetooth® communication for refrigeration

Dixell presents a useful connectivity solution for XR-CHC & XRB-CHC refrigeration controllers with the introduction of the Bluetooth® communication system. Through the new Emerson™ CONNECTED App, available both for iOS and Android, you can control bottle coolers (XRB-CHC), refrigerated cabinets and cold rooms (XR-CHC) and more in real time. All common control tasks of the instrument are now replicated on your smartphone with all the usability of this technology. Last but not least, the Emerson™ CONNECTED App features a complete report by graphs and statistics: a very useful diagnostic tool for all "service operations". The App also gives the possibility to see functional status messages (presence of alarm conditions) related to the cabinets status. The EmersonConnected Cloud instead, allows the user identification and the management of accesses with the related permission levels.

- X-MOD proximity sensor for light control and sales performance indication



- Visit <https://dxapp.cloud>



Our connectivity solution



XRi & XWi



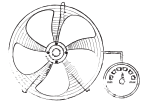
Solutions for variable capacity compressors

The XRi & XWi controllers are the ideal solution for the refrigeration and retail market. They have been developed for optimal management of cabinets with variable capacity compressors by using frequency signal command. These controllers guarantee high energy savings, increase reliability of the compressors and fans and, at the same time, ensure efficient management of the product's maintenance temperature.

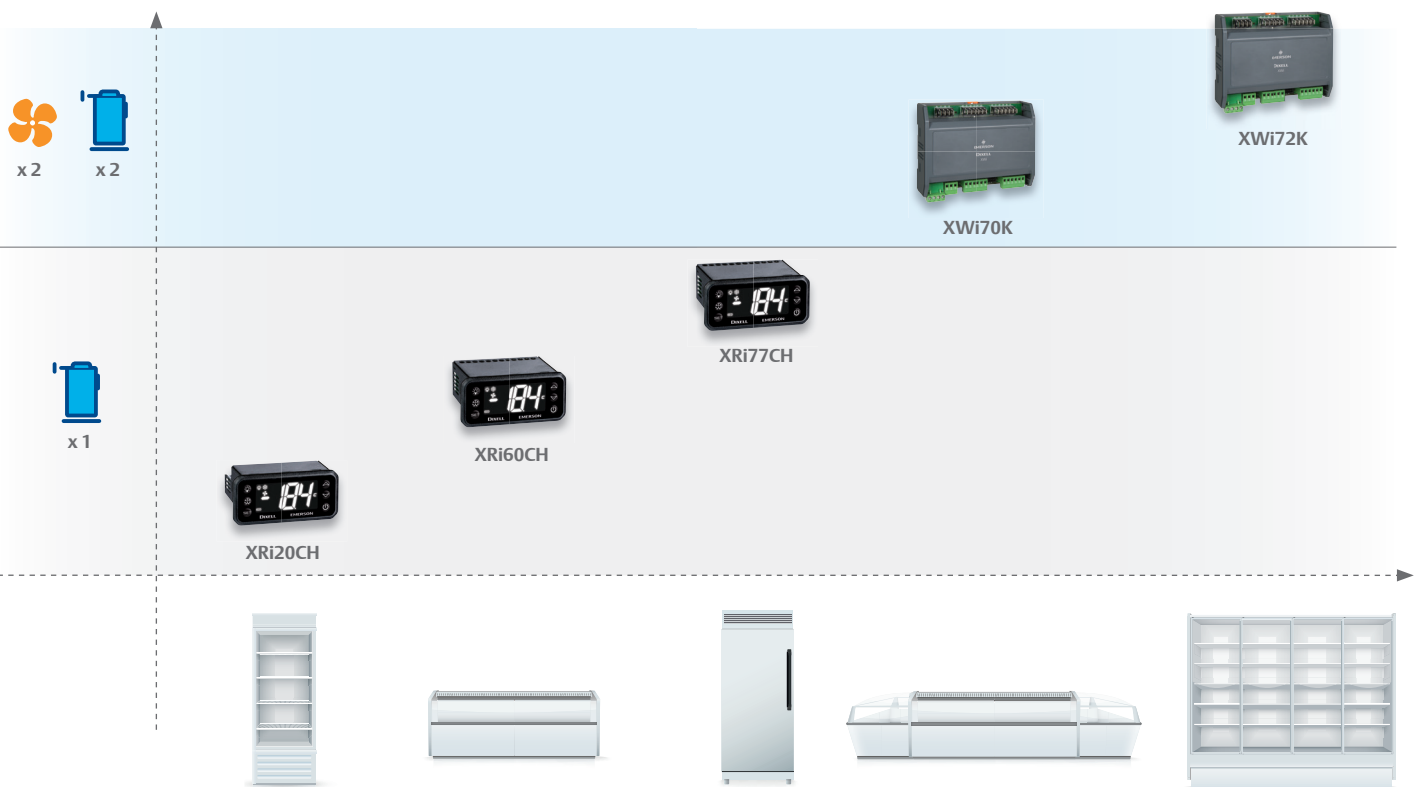
- Double parameter map to be used in different applications
- Advanced defrost control
- Compressor speed optimization
- Improved reliability of the application
- Integrated advanced functions for energy saving
- Mechanical stress and noise reduction

ONLY FOR XWi CONTROLLERS

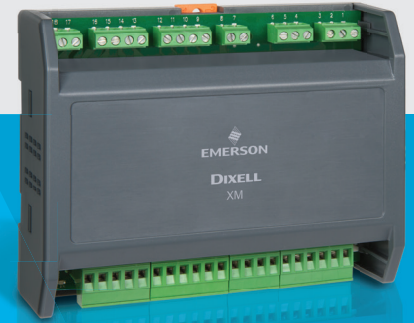
- 2 analogue outputs to supply a 0÷10Vdc or 4÷20mA output signal
- Variable speed fan management
- Compatibility with all Dixel keyboards: vertical and horizontal, membrane and glass touch



The scalable solution



XM600 v. 5.3



Enhanced case controllers for multiplexed cabinets

The new version of the XM600 series for multiplexed cabinets is performance enhanced, efficient and flexible to satisfy the needs of the market. A strength of this new version is its easy installation thanks to pre-configured maps and backwards compatibility useful in existing installations. Now it's also possible to update the project directly from the field, by adding new refrigerants or updating the firmware with new functions.



EASY & PERFORMANCES

All models have the same firmware platform to ensure the same robust performance whether using a stepper or a PWM valve. Ease of use and maintenance are guaranteed by common parameters and functions.



QUICK UPDATE

Today it's possible to easily reprogram all XM600 controllers directly in the field; new gas, advanced solutions, and more... they are always available for your controllers even if already installed.



CLEAN MODE FUNCTION

This new function allows the cabinet to be washed safely without disconnecting it from the monitoring system.



FAST COMMUNICATION

A faster communication between controllers and supervising systems allow the cabinet to be monitored in real time ensuring a prompt intervention of the service in case of alarms.



MULTI MAP

The customer can choose the most suitable solution among different kinds of applications: low temperature, normal temperature, plate heat exchanger, subcooler and more.



HIGH FLEXIBILITY

The flexibility of the XM600 series allows to set 2 digital inputs as 2 probes in order to load safety monitoring of plug-in cabinets.



AUTO-ADAPTIVE SUPERHEAT

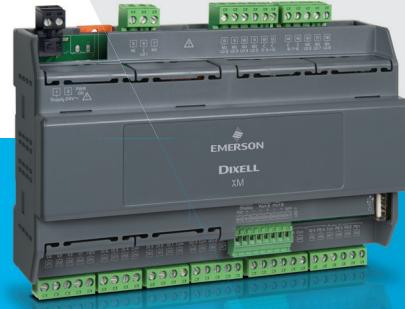
This algorithm for the superheat management improves the cabinet performance in terms of ease of use and energy savings.



HIGH COMPATIBILITY

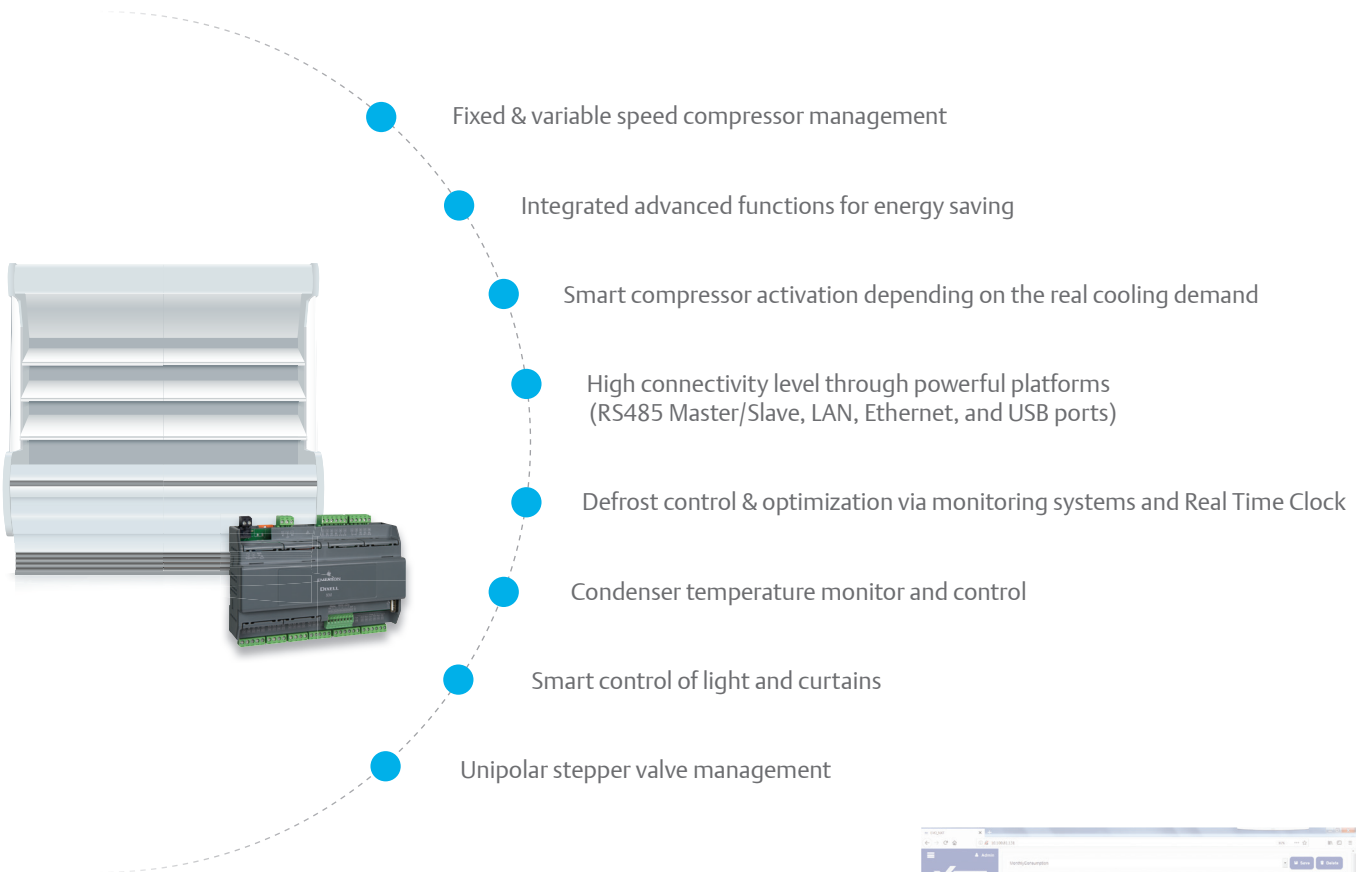
The LAN, compatible with previous versions, allows new controllers to be installed in already existent networks receiving the same commands and sharing the same information.

XM800



Powerful controller for integrated display cases

The XM887D controller is designed for integrated display cases with compressor on board where Propane as refrigerant is used. The condensation can be done via air or water heat exchanger. It is suitable for applications with up to 3 evaporators, 3 circuits and 3 fixed or VSD compressors. This new solution features a powerful iPro platform in a 10 DIN case that provides high connectivity thanks to its several communication ports. XM887D can be connected to the new IPCH keyboard, to the Visograph graphic display and also to the Visotouch touch display for a simple and intuitive interaction with the system.



Enhanced communication

XWEB EVO is Dixell's family of controlling and supervising systems that controls remotely the XM800 functioning.



High HMI compatibility

The XM887D controller can support LED, LCD or touch screen keyboards ensuring, for every application, the right solution in terms of information and format.



Kind of applications

The controller is the ideal solution to manage different kind of display cases with compressor on board. Here below 3 standard applications that can be controlled via XM887D.

MULTICIRCUIT EVAPORATOR DISPLAY CASE

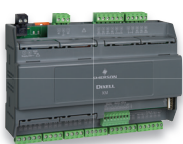
- 1 evaporator
- up to 3 compressors
- up to 3 circuits
- outputs: 1 defrost, 1 fan, 1 light/night blind

MODULAR DISPLAY CASE

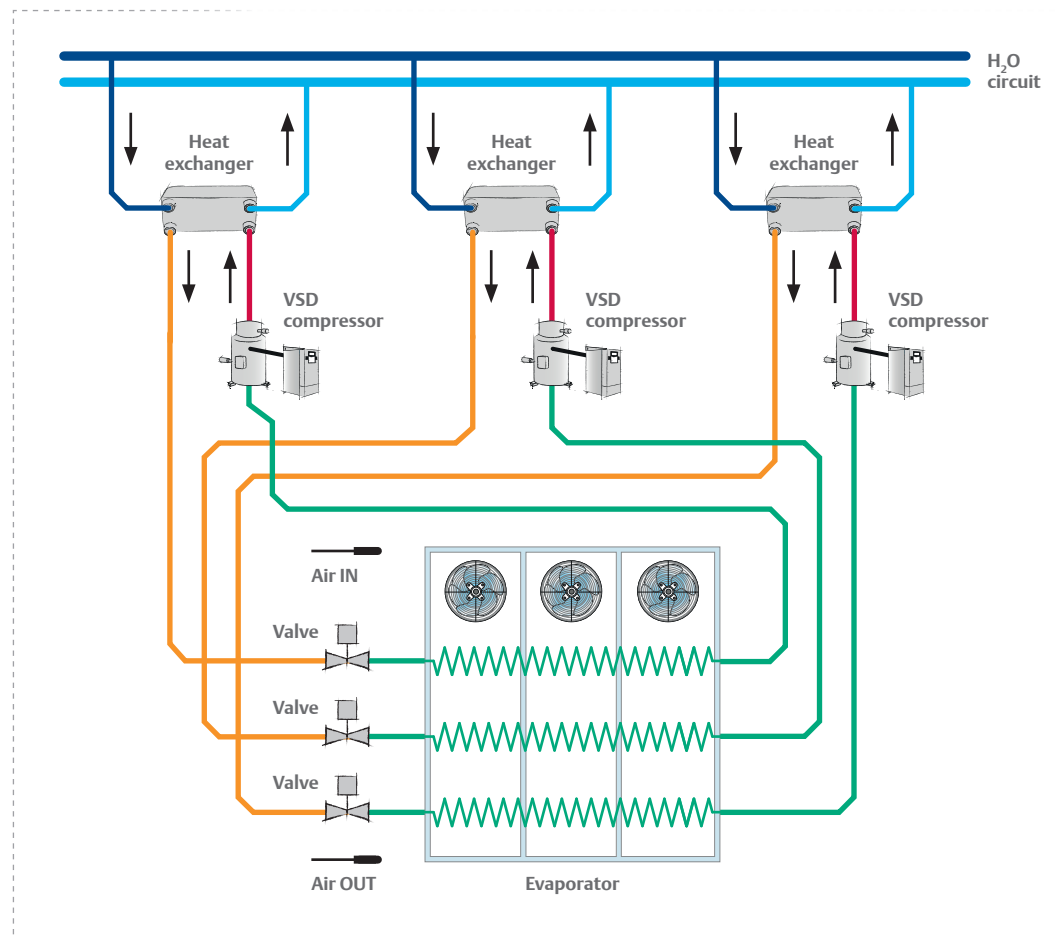
- up to 3 evaporators
- up to 3 compressors
- up to 3 circuits
- outputs: 1 defrost, 1 fan, 1 light/night blind

MULTICIRCUIT EVAPORATOR DISPLAY CASE WITH VSD COMPRESSORS

- 1 evaporator
- up to 3 VSD compressors
- up to 3 circuits
- outputs: 1 defrost, 1 fan, 1 light/night blind



Controller



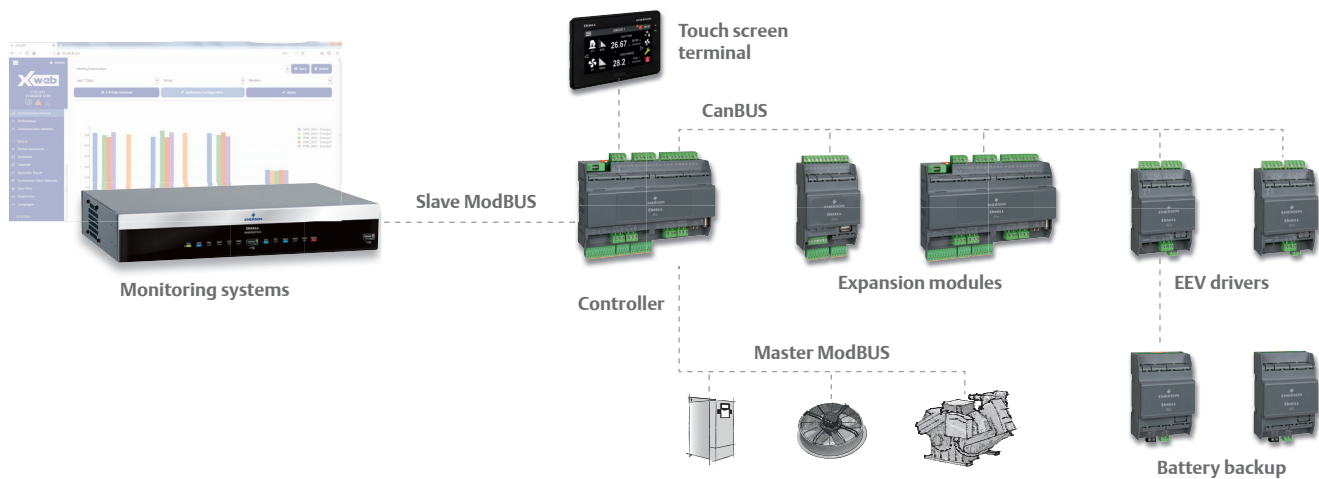
iProRACK v. 2.8



Solutions for transcritical CO₂ compressor racks

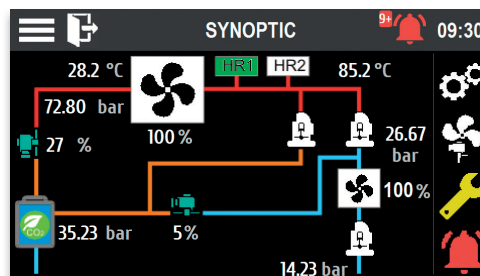
The iProRACK family is designed for the management of racks with standard refrigerants, CO₂ subcritical applications and transcritical CO₂ booster systems. It manages compressor racks with up to 2 circuits and 12 compressors per circuit.

In transcritical applications it directly controls the high pressure valves, heat recovery systems, by-pass valve and parallel compression.



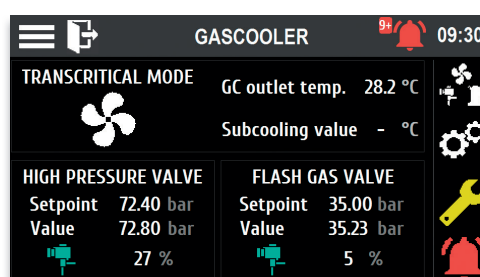
Visotouch interface

- More powerful way to work through the touch technology
- Intuitive interface to get the information with fewer taps
- Frontal red LED (alarms) and green LED (ON status)
- Graphic display TFT
- Icons with "animation" for a detailed status of the machine



SYNOPTIC

The synoptic screen offers a general view of the machine. For a detailed overview, it is possible to touch every single part of the circuit.



GASCOOLER

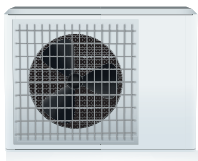
All useful information in a unique screen, such as: the status of the valve, the pressure and temperature.

New features

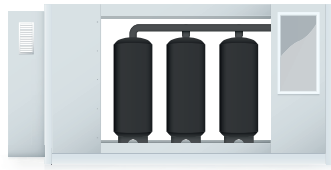
- Dual heat recovery for transcritical CO₂ rack with gas cooler by-pass and pump management
- Oil injection management
- Parallel compression for COP optimization
- Compressor pump down
- Gas cooler optimization
- 3 de-superheater management
- Management of gas leak detectors
- Management of electronic fans or fans with inverter via ModBUS
- Coresense™ integration via ModBUS connection



Available for



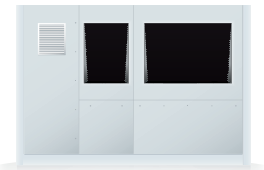
Condensing units



Compressor racks

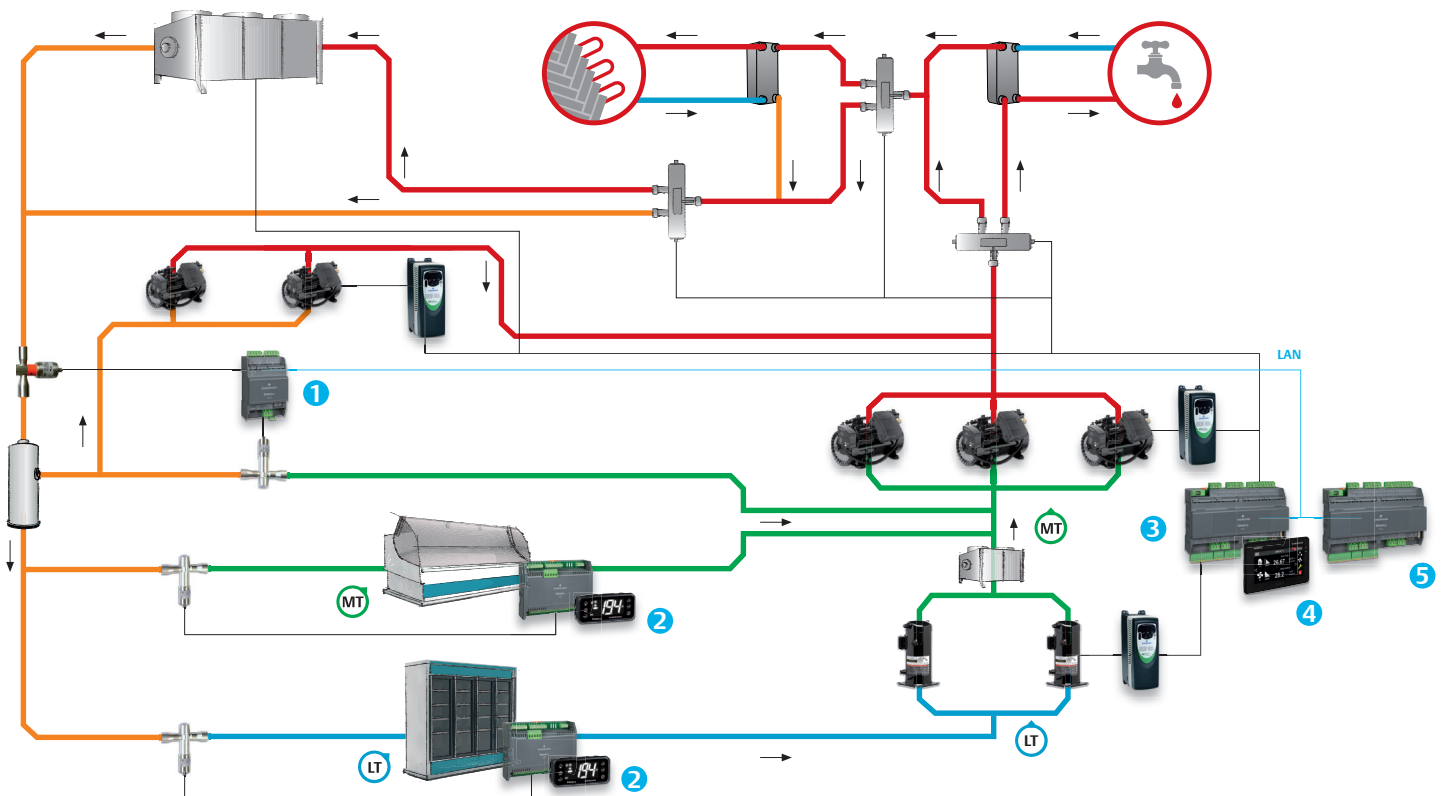


Advanced compressor racks



Compressor packs

Transcritical solution-booster plant with dual heat recovery, gas cooler by-pass & parallel compression and de-superheater



1 XEV20D
electronic expansion
valve driver

2 XM600
cabinet controller

3 IPR215D
compressor rack controller

4 VISOTOUCH
touch screen display

5 IPX215D
expansion module

EmersonClimate.eu

Emerson Commercial & Residential Solutions

Dixell S.r.l. - Z.I. Via dell'Industria, 27 - 32016 Alpago (BL) ITALY - Tel. +39.0437.9833 r.a. - Fax +39.0437.989313
climate.emerson.com/en-gb/brands/Dixell - Dixell@Emerson.com

release 4.0 - 1582006400-GB

All trademarks are property of their respective owners. Dixell reserves the right to alter its products without notice. All rights reserved. Because environmental conditions are outside of Dixell's control, we cannot assume liability for results obtained nor any damages that may occur due to improper application. Manuals and updates are available on our Web Site EmersonClimate.com

EMERSON. CONSIDER IT SOLVED.™